

EDMONTON STAMP CLUB

# BULLETIN

Volume 108, Number 4 Show 2019 ISSN: 0046-1318  
Mailing address: P.O. Box 399, Edmonton AB T5J 2J6  
Website: <http://www.edmontonstampclub.com>



## **Edmonton Spring National, March 23 & 24**

Central Lion's Recreational Centre, 113 Street – 111 Avenue

Regular meetings

St. Joseph High School Cafeteria, 10830 - 109 Street, 6:00 pm

**April 1<sup>st</sup> & 15<sup>th</sup> & 29<sup>th</sup>**

**May 13<sup>th</sup> & 27<sup>th</sup>**

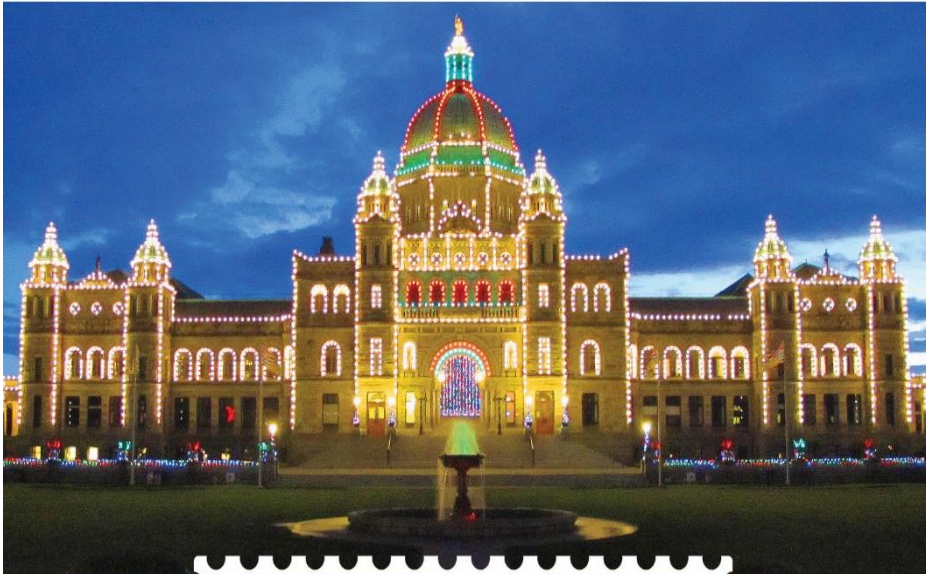
**May 25<sup>th</sup> (Red Deer)**

**June 10<sup>th</sup> (elections)**



**WEEDA STAMPS LTD.**  
 Based in the historic capital city,  
**Victoria, BC, Canada.** *Serving the world.*

Beverly Fox · Andrew Blanchard · Jonathan Woensdregt



Buy and sell through our **popular online auctions**, and find exactly what you're looking for in our ongoing **Dutch Auctions** and **eBay store!**

**WWW.WEEDA.COM**  
**TOLL-FREE 1-888-685-1826**  
 weedastamps on eBay



Sell to us directly, **no collection too big or too small.**

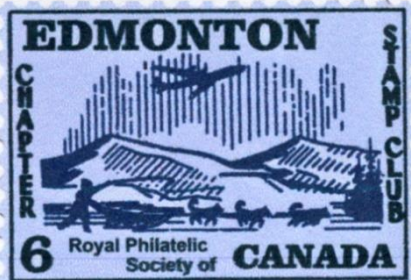
Consignments accepted for upcoming auctions.

By appointment only  
 811 Princess Ave  
 Victoria, BC Canada



Mailing Address:  
 PO Box 5096  
 Station B

Victoria, BC V8R 6N3 Canada  
 Email [beverly@weeda.com](mailto:beverly@weeda.com)  
 Phone 250-385-1826  
 Toll-free 1-888-685-1826



The Edmonton Stamp Club dates back to 1912. The Club is Life Chapter #6 of the Royal Philatelic Society of Canada and Chapter #680 of the American Philatelic Society. **The editor welcomes communications of all kinds—letters, comments and articles. Deadline, 7 days before first**

**monthly meeting.** These may be forwarded to Fred Tauber, Edmonton Stamp Club, Box 399, Edmonton, Alberta, T5J 2J6, click “contact” on our website or email to [fxtauber@shaw.ca](mailto:fxtauber@shaw.ca)

## 2018 - 2019 Board of Directors

Area code 780-

Barnes, Richard	President	488-5288	<a href="mailto:rtbarnes@shaw.ca">rtbarnes@shaw.ca</a>
Schutte, Robert	Past President	989-1260	<a href="mailto:rschutte@telusplanet.net">rschutte@telusplanet.net</a>
Dykstra, Ed	Vice President	587-341-0804	<a href="mailto:eddykstra@shaw.ca">eddykstra@shaw.ca</a>
Lockau, Jim	Vice President	467-4825	<a href="mailto:jimlockau@gmail.com">jimlockau@gmail.com</a>
Rod Verrier	Treasurer	489-7506	<a href="mailto:vcorp1@telus.net">vcorp1@telus.net</a>
	(summer meeting coordinator)		
Stein, Warren	Secretary	463-9881	<a href="mailto:warren.stein@worleyparsons.com">warren.stein@worleyparsons.com</a>
	(Archivist)		
Tauber, Fred	Membership	469-3034	<a href="mailto:fxtauber@shaw.ca">fxtauber@shaw.ca</a>
	(Webmaster-edmontonstampclub.com & Editor-Bulletin)		
Kuester, Peter	Director	451-0520	<a href="mailto:peju@shaw.ca">peju@shaw.ca</a>
	(Circuits Manager)		
Ellis, David	Director	457-7491	<a href="mailto:dwellis@shaw.ca">dwellis@shaw.ca</a>
Pacey, Jeff	Director	989-3491	<a href="mailto:jpacey@telus.net">jpacey@telus.net</a>
Spencer, Keith	Director	437-1787	<a href="mailto:keithrspencer41@gmail.com">keithrspencer41@gmail.com</a>
	(NWFSC, RPSC liaison)		
Hetke, Dave	Director	909-3974	<a href="mailto:davehetke@yahoo.com">davehetke@yahoo.com</a>
Wissink, Barend	Director	922-5019	<a href="mailto:wissink@mcsnet.ca">wissink@mcsnet.ca</a>
Fast, Malcom	Director	966-2812	<a href="mailto:mfast@beyondnumbers.ca">mfast@beyondnumbers.ca</a>
Ken Bailey	Director	473-6903	<a href="mailto:kbailey1@telusplanet.net">kbailey1@telusplanet.net</a>
Gary Belyea	Director	483-7099	<a href="mailto:belyeagary@gmail.com">belyeagary@gmail.com</a>
Dave Pattison	Director	914-7742	<a href="mailto:pattisond@gmail.com">pattisond@gmail.com</a>
Piercey, David	BNAPS liaison	437-2771	<a href="mailto:dpiercey@telus.net">dpiercey@telus.net</a>
Kelly Liusz-Moser	Spring Show coordinator	569-0044	<a href="mailto:liuszmoser@gmail.com">liuszmoser@gmail.com</a>

Advertising rate schedule: Full page \$30, half page \$18. Nonmembers, \$1.00 per line up to 5 lines. Ten issue discount 20%. Five issue discount 10%. Members, Free, up to 5 lines. Contact Fred Tauber at [fxtauber@shaw.ca](mailto:fxtauber@shaw.ca) or Edmonton Stamp Club by mail.

# President's Greetings

Welcome to the Edmonton National Spring Show of March 23-24, 2019. It is the first National Stamp Show in 2019 schedule of National Stamp Shows in Canada. The publication Canadian Stamp News, January 2019 issue has a very good introduction to this show with an article "Fun frames offer another aspect to exhibiting at the Edmonton Spring National" written by Jesse Robitaille. It covers many aspects of the show from the 15 expected stamp dealers, through the 100 plus exhibits with additional Fun Frames provided by members of the local Edmonton Stamp Club.

Admission to this show is FREE. The theme of this show is Pandas. There will be a special thematic display of panda stamps for both adults and children to enjoy. At the Edmonton Stamp Club table there will be a free Panda postcard for the kids. There will be the usual Show First Day Covers with the special Panda stamps and show cancellations. There are door prizes, tickets for sale for a draw of a Very Fine Used One Penny stamp and other information available at the Club Table. Also available is a kids table with free stamps for the kids, the ESC circuit books, and a freebie table. Again, this year the ESC is offering a free general estate service for individuals wanting to know about "Dad's old stamp collection".

The Edmonton Stamp Club is revisiting a previous feature of our Spring Show, seminars. The first seminar is on Saturday, 23 March at 1030 AM presenting a general discussion of how to start preparing to sell a stamp collection. 1 PM Jan Brookes is tentatively booked for a discussion on Panda stamps followed at 3 PM by Dave Bartlet, Philatelic Special Society of Canada who will speak on Kiosk Stamps.

Members of the Edmonton Stamp Club will be wearing Club Name Tags. If you have any questions or comments, please contact the ESC Club Table or any club member. It is very important that we get feedback from individuals attending this show. We need to know how you enjoy the show, if there is anything that needs improving or if there is anything that can make next year's National Spring Stamp Show a better experience for you.

We invite any member of the public to attend our regular stamp club meetings and summer meeting. The Edmonton Stamp Club regularly meets twice a month at 630 PM in the cafeteria of the of the St Joseph High School September to June. We have a special summer meeting in the Lions Seniors Center on Monday 29 July 2019 starting at 4 PM.

President's Message Continued

I hope you had the time to look at all the displays, frames, special feature tables, attend the seminars, visit with the dealers, and ask questions of the ESC members on the show floor or at the ESC table. The completion of your free admission form and putting it in the box makes you eligible for the April 1<sup>st</sup> draws for door prizes. At the same ESC meeting the stamp draw will take place. I hope you will look back on your visit to the 2019 Edmonton National Spring Show was an enjoyable experience.

Richard Barnes

---

## The Panda

The Panda bear live only in China. Known as the Giant panda, they are endangered due to hunting and habitat loss. The panda's primary habitat is the Yangtze Basin region. Fragmentation of the area caused by roads and railroads has isolated panda populations, which not only prevents them from meeting and mating, but also reduces their access to bamboo.

Pandas themselves are also economically and culturally valuable, as they are the national symbol of China and generate significant economic benefits for local communities through ecotourism and other activities.

Due to their inefficient digestion, giant pandas must eat up to 84 pounds of bamboo per day. However, the amount of available bamboo has rapidly decreased as the demand for forest resources in China has increased. In an effort to address the habitat loss that threatens the giant panda population, the government of China began creating reserves in 1970. Pandas are particularly difficult to save because of their limited species distribution. They are found only in bamboo thickets at altitudes of 1,200 to 3,500 meters in southwest China. Largely solitary, the females have small territories. A male's territory is larger and overlaps with the territory of several females. The two sexes rarely interact outside of the mating season. Further complicating the issue, females only ovulate for two to three days per year.

These lovable and calm quiet animals have become the symbol of the World Wildlife Fund. Numerous businesses and restaurants have named themselves after the Panda. Of local pride are of course the

Continued page 7

# 2019 Spring Show Offerings



**POST CARD**

Edmonton Stamp Club National Spring Show  
 Central Lions Rec Centre  
 11113 - 113 Street NW Edmonton, AB  
 March 23 & 24, 2019  
 This year's Theme "PANDAS"

Edmonton Stamp Club  
 P.O. Box 399, Edmonton AB T5J 2J6

Printed by Sherwood Print & Copy, Sherwood Park, AB

## Post Card - Free

TIMBERLY PHOTOS™

Giant Panda


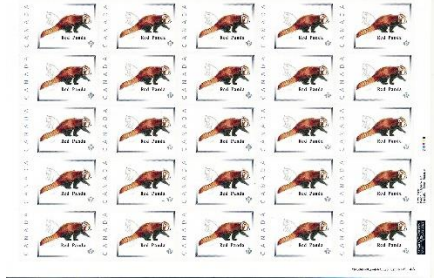
PICTURE POSTAGE™




TIMBERLY PHOTOS™

Red Panda

PICTURE POSTAGE™

## Sheet 26 P stamps (order)


CANADA CANADA

Giant Panda



CANADA CANADA

Red Panda



## Booklets 12 P stamps (order)

world-famous U of A women's basketball team: The Pandas! Many children must have had at least one Panda 'teddy bear' or a paint by numbers set showing pandas. A few animated series of movies featured another lovable star: Kung Fu Panda. Is it any surprise that the Panda has appeared on numerous postage stamps over the world?

Red Pandas were discovered first by Westerners and are also endangered by habitat loss and unfortunately – poaching. Multicolored furred mammals, a mostly bamboo diet, and both being from Asia are all these two species have in common. Red pandas are omnivores who live mostly off fruits and bamboo and are distant cousins to the racoon. They don't really have any living species like them. Greater Pandas on the other hand are bears though their diet is very similar (mostly bamboo as well). It was originally thought that they were closer in relation (they thought red pandas were more closely related to bears and greater pandas to raccoons). That is why they have similar names, though red pandas were the first discovered by westerners, thus they are the original panda.

Ed Dykstra

## The Stamp Gallery

Featuring Canada, British Colonies, Europe  
And the Rest Of The World



Ihor Rudyk

14027-101 Ave.  
Edmonton, Alberta  
T5N 0K2

open: Thursday to Saturday  
10am to 5 pm

Phone: 780-760-6078

email: [ivrudyk@shaw.ca](mailto:ivrudyk@shaw.ca)

**Over 500 Red Boxes**

**Half Catalogue Or Less**

# 2019 Spring Show Judges



## Ed Kroft Q.C. FRPSC

Ed Kroft is currently an international level judge and president of the Royal Philatelic Society of Canada (RPSC). Ed lives in Vancouver Canada and has collected stamps for over fifty-five years. He is the past President of the Society of Israel Philatelists (SIP) and has been actively involved with that society for many years. Ed has written many articles for various

philatelic publications relating to philately of the Holy Land and has successfully exhibited at the regional, national and international levels. In 2012, Ed was the winner of the Reggel Award of the SIP for outstanding contributions to Holy Land philately. Ed was also the 2013 Geldert Medal awarded by the RPSC and the 2017 winner of the Jennings Award from the American Association of Philatelic Exhibitors (AAPE). Ed is a member of many societies including the RPSC, PHSC, PSSC, APS, SIP, BNAPS, AAPE, ONEPS and the Holy Land Philatelic Society. His interests include the postal history of the Holy Land, the Middle East, and Canada and Aerophilately.



## Norma Nielson's Philatelic CV

### Philatelic Service

*Calgary Philatelic Society.* Member, Board of Directors of, 2008-2012; Treasurer, 2012-2018. Assisted president of the American Topical Association with a project to review DVDs.

Next page



### **Philatelic Publication and Editing**

Norma presented a summary of her Lloyd's exhibit for *Topical Times* after winning the Reserve Grand Award at the National Topical Stamp Show (2009). She also published its story in *WE Think* (2009). Her research on the 5c small queens cover addressed to 55 individuals at Lloyd's appeared as an interesting story in the *Canadian Philatelist* (2010). An article entitled "Using Genealogy Resources for Philatelic Research" appeared in November 2012 in the *American Philatelist*.

### **Presentations**

Presenter at Calgary Philatelic society monthly meetings on five separate occasions. Organized and presented seminars and other activities at the Glenbow Museum (Calgary) and CALTAPEX.

### **Memberships**

Member of Royal Philatelic Society of Canada, American Topical Association, Calgary Philatelic Society, Ships on Stamps study circle, and Women Exhibitors.

**Exhibiting.** Gold Medal National Level Exhibitor; Regional Show Grand Award winner.



### **Steve McGill Philatelic**

My collecting interests have been focused on the stamps of the U.K. for the past decade with special interest in exhibiting the Machin series from its forerunners to the latest no-value-indicated printings. Additionally, I collect central Europe, China and parts of

Scandinavia. I belong to several organizations related to the hobby including the The Royal Philatelic Society of Canada, Great Britain Philatelic Society, the Great Britain Collectors Club (Past President), The China Society, The Rocky Mountain Philatelic Library (Board Member), The Rocky Mountain Stamp Show (Past Chairman) and I am Fellow of the Royal Philatelic Society of London. I had the pleasure of joining the APS Philatelic Judges team a few years ago and regularly participate as a show judge.

I am actively employed as a partner in a California investment banking business and live in Highlands Ranch, Colorado with my wife, Louann.

## Show Schedule

### Saturday March 23<sup>rd</sup>

10:00 am	Show Opens
10:30 am	Estate Seminar
All Day	On Site Estate Appraisals by Keith Spencer
3:00 pm	PSSC Lecture presented by Dave Bartlet
5:00 pm	Show Closes

### Sunday March 24<sup>th</sup>

8:00 am	Doors open for Awards Breakfast (tickets available for purchase at club table on Saturday)
8:30 am	Breakfast Served in Cafeteria
9:00 am	Awards Presentation in Cafeteria
10:00 am	Show Opens
10:30 am	Exhibitor Feedback Session
4:00 pm	Show Closes

---

### *Both days –*

Show Covers available for sale, Competitive and noncompetitive Fun Frame Exhibits on display.

Door Prizes, Junior Table, Free Stuff Table, Club Circuit Books

Stamp collection evaluation table.

Edmonton Stamp Club Spring National Stamp Show commemorative covers.

---

## 2019 Show - Post Cancels




## Seminars

### Saturday March 23<sup>rd</sup>

- Estate Seminar 10:30
- **Dave Bartlet 3:00**  
'The Evolution to Kiosk Stamps'

PHILATELIC SPECIALISTS SOCIETY  
OF CANADA



EDMONTON STAMP CLUB  
SPRING NATIONAL 2019

You are cordially invited to attend the  
**PSSC Lecture**

**Dave Bartlet, OTB**  
The Evolution to Kiosk Stamps

**Saturday, March 23, 2019 at 3 PM**  
Central Lions Recreation Centre  
Edmonton, Alberta

## Meeting Dates

The Edmonton Stamp Club meets Mondays at 6:00 p.m. in the cafeteria of St. Joseph High School, 10830 - 109 Street. Park to the north of the school and use the main entrance at the south-east corner of the school. For information about the club call 780-488-5288 or 780-437-1787.

**Edmonton Stamp Club  
National Spring Show  
March 23<sup>rd</sup> & 24<sup>th</sup>, 2019**

**Summer Meeting/Auction  
July 29<sup>th</sup>, 2019**

### 2019

April 1<sup>st</sup>, 15<sup>th</sup> & 29<sup>th</sup>  
May 13<sup>th</sup> & 27<sup>th</sup>  
May 25<sup>th</sup> (Red Deer)  
June 10<sup>th</sup> (elections)

*Edmonton BNAPS* (British North America Philatelic Society) meets from time to time. All BNAPSers welcome. For information contact David Piercy at 780-437-2771 or Steven Friedenthal at 780-721-3669.

## EDMONTON STAMP CLUB

2019 SPRING NATIONAL STAMP SHOW



Mar 23-24, 2019

Saturday 10-5pm, Sunday 10-4pm

Central Lion's Recreational Centre

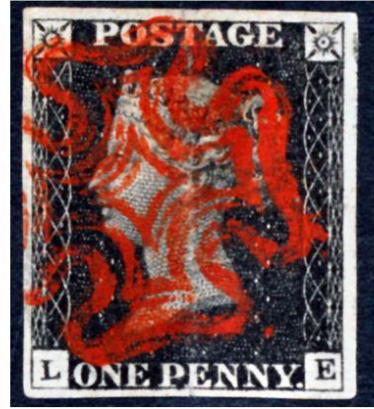
113 St &amp; 111 Ave

Stamp Dealers from across Western Canada  
 Stamp Circuit Books, Door Prize Draw, Junior Stamp Table  
 National-level Competitive Stamp Exhibits (WSP)  
 Exhibits & Chairperson : [liusmoser@gmail.com](mailto:liusmoser@gmail.com)

Free Admission, Free Stamp Evaluations  
 For further information: [www.edmontonstampclub.com](http://www.edmontonstampclub.com)  
 The Theme of this year's show is : Pandas



**Edmonton Stamp Club**  
**Spring Show Raffle 2019**  
**The World's First Stamp**



(pictured actual stamp)

**1 for \$5 or 3 for \$10**

Used, Very Fine (cat \$350)

**Edmonton Stamp Club Spring Show**March 23<sup>th</sup> & 24<sup>th</sup>Draw: Club Meeting April 1<sup>st</sup>, 2019

## A Short Note of Gratitude

In 1912 Edmonton's population had doubled within a year to an impressive 53600 and the Edmonton Stamp Club was established. Edmonton in 2019 approaches the one million mark and the ESC can point with pride to a long history, not only in the city, but within Canada as well. Our longevity must be attributed to the commitment of our members and their generosity to our club.

Last Fall, Jeanette in Lloydminster spent \$30 in postage to ship and donate a large box of material that she felt the club could use either for the juniors or items that, when auctioned, would provide more operational funds for the club. It was a gesture that touches and benefits all of our members. Our Spring National show offers prizes and giveaways that have been donated, either by Canada Post, businesses that deal with our hobby, or dealers who also support our club by attending and fulfilling our members' philatelic needs.

# Awards to Be Presented

## Edmonton Spring National Stamp Show, 2019

All awards are given at the discretion of the judges.

<b>Edmonton Stamp Club</b>	<b>AAPE</b>
<ul style="list-style-type: none"> <li>• Grand Award</li> <li>• Reserve Grand Award</li> <li>• Best One Frame Exhibit</li> <li>• Youth Grand Award</li> </ul>	<ul style="list-style-type: none"> <li>• 2 Gold Pins</li> <li>• 2 Silver Pins</li> <li>• Creativity Award</li> <li>• WE Award</li> <li>• Novice Award</li> <li>• Headings and Plan Award</li> <li>• Youth Awards</li> </ul>
<b>APS</b>	<b>ATA</b>
<ul style="list-style-type: none"> <li>• Medal of Excellence: pre-1900</li> <li>• Medal of Excellence: 1900-1940</li> <li>• Medal of Excellence: 1940-1980</li> <li>• Medal of Excellence: post 1980</li> <li>• Research Award</li> </ul>	<ul style="list-style-type: none"> <li>• ATA First Award</li> <li>• ATA Youth Award</li> </ul>
<b>BNAPS</b>	<b>Elizabethan Study Group</b>
<ul style="list-style-type: none"> <li>• Best BNA Exhibit</li> <li>• Research Award</li> <li>• Best 2x4</li> <li>• Best BNA one frame</li> </ul>	<ul style="list-style-type: none"> <li>• Corgi Award</li> </ul>
<b>Philatelic Specialists Society Award</b>	<b>Canadian Aerophilatelic Society Award</b>
<b>United Postal Stationery Society</b>	<b>American Airmail Society</b>
<ul style="list-style-type: none"> <li>• Marcus White Award</li> </ul>	

<b>Northwest Federation</b>	<b>Postal History Society of Canada</b>
<ul style="list-style-type: none"> <li>• 2 Thunderbird Awards</li> </ul>	<ul style="list-style-type: none"> <li>• Best BNA Postal History Exhibit</li> <li>• RitchToop Best Military Postal History Exhibit</li> </ul>
<b>Royal Philatelic Society of Canada</b>	<ul style="list-style-type: none"> <li>• RPSC Excellence - Treatment /Traitement Award</li> <li>• RPSC Excellence - Material/Matériel Award</li> <li>• PRSC Excellence - Presentation/Présentation Award</li> <li>• RPSC Excellence - Title/Synopsis/Titre Award</li> <li>• RPSC Novice Award</li> </ul>

## Dealers - Spring Show 2018

<p><b>R. D. Miner Philatelics</b> 83 Woodgreen Drive SW Calgary, AB. T2W 4G6 Email: rdminer@telus.net</p>	<p><b>Royal William Stamps Ltd.</b> Box 69058 Skyview Postal outlet Edmonton, AB. T5L 5E0 Email: royalwil@compusmart.ab.ca <i>Web: lornatstamps.com</i></p>
<p><b>Zatka Philately Ltd.</b> Ihor Rudyk P.O. Box 1181, Stn. M Calgary, AB. T2P 2K9 Email: zatkaphil@shaw.ca</p>	<p><b>Deveney Stamps</b> PO Box 644 Penticton, BC. V2A 6J9 Email: docdon@shaw.ca Web: deveneystamps.com</p>
<p><b>Stamp Gallery</b> 14027 101 Ave. NW Edmonton, AB. T5N 0K2 Email: ivrudyk@shaw.ca</p>	<p><b>The Stamp Collection Connection</b> Suite 2029, 61 Broadway Boulevard Sherwood Park, AB. T8H 2C1 Email: jmson@telus.net</p>

<p><b>MJR Postcards &amp; Covers</b>  P.O. Box 36027, Castledown P.O.  Edmonton, AB. TXV 5V9  Email: <a href="mailto:mjrcards@telusplanet.net">mjrcards@telusplanet.net</a></p>	<p><b>Lighthouse Publications</b>  Phillipe LaPerie  Daniel Rottele  Phone: 1-800-363-7082</p>
<p><b>Railside Philatelic Services</b>  Peter Fleck  Box 16 Site 2 R.R. 4,  Red Deer County, AB T4N 5E4  Email: <a href="mailto:peterfleck@telus.net">peterfleck@telus.net</a></p>	<p><b>Dave Hetke</b>  Email: <a href="mailto:davehetke@yahoo.com">davehetke@yahoo.com</a>  780-909-3974</p>
<p><b>Brian Gosselin</b>  Vancouver, BC  778-984-4126 (World Wide Stamps)  Briangosselin1989@gmail.com</p>	<p><b>Steve Trask</b>  P.O. BOX 1358  Battleford, SK. S0M 0E0  Phone: 306-937-3713</p>
<p><b>TSCC Discount Table</b>  Bob Hyodo  Edmonton, AB</p>	<p><b>Firmin Wyndels</b>  Victoria, BC  Email: <a href="mailto:firminwyndels@hotmail.com">firminwyndels@hotmail.com</a></p>
<p><b>D &amp; L Kaye Enterprises</b>  Box 4113, R.P.O.S.  Lake Country, BC. V4V 1A7  Email: <a href="mailto:dlk@uniserve.com">dlk@uniserve.com</a></p>	<p><b>Luciano Bassetto</b>  30 N. Kootenay Street  Vancouver, BC V5K 3P7  Email: <a href="mailto:bellacatering@hotmail.com">bellacatering@hotmail.com</a></p>

Continued from page 12

Donations have provided refreshments to members for years now and although Mr. Bulow has passed, his memory of „Have drink on Horst!“ remains. Then there is also the time and effort committed to the club over the years by more names than I could mention, but they are known. And appreciated.

My short note has ended up longer than anticipated but I will close with this request. If your hard times are over, with the kids grown and on their own, the mortgage taken care of, and a cruise planned for the next Spring, consider including a little something for the ESC this year .... every little bit helps and creativity in your philatelic philanthropic pursuits gives everyone extra satisfaction. Thanks for your time and consideration.

Peter Kuester

## Exhibits - Edmonton Spring National Show 2019

Frame #

### Court of Honor

Jan Brookes, Calgary, AB

#1-6

#### ***Of Men and Giant Pandas***

This exhibit is about the story of Giant Pandas, their discovery by westerners, their captivity in zoos and the reserve in China as well as discussions as an animal.

### Competitive Exhibits

Category

Frame #

Hal Kellett, Saskatoon, SK General

#7-9

#### ***What to do in London During World War II – Letters Home 1941 to 1945***

This exhibit follows the life of Sgt. Lorne Henry, 5th Canadian Armoured Division, Brighton, England from November 1941 to late 1943 and 1945.

Sam Chiu, North York, ON General

#10-14

#### ***Chefoo/Yantai, China, Picture Postcards, 1898-1911***

Picture postcards of chefoo/Yantai in the Qing Dynasty are shown following the rise and fall of the most important printer, Sietas & Co, and its competitors.

David Piercey, Edmonton, AB One Frame

#15

#### ***The Cancellations of Newfoundland 1865-1908***

Corks, fancy cancels and other obliterations found on the early North American banknote company's stamp issues.

Earle Covert, Raymond, AB General

#16-23

#### ***King George VI Private Order Envelopes***

Shown are all of the private order King George VI envelopes I have found in 48 years. No regular or official envelopes are shown.

Jim Taylor, Calgary, AB General

#24-28

#### ***Earth Science from Flat Earth to Planetary Tectonics***

The development of Earth Science, Continental Drift Theory, proposed by Alfred Wenenger and the modern science of Plate Tectonics.

Next page



- Ingo Nessel, Brampton, ON One Frame #29  
***Hong Kong 1945 - Order Out of Chaos***  
 This exhibit documents the early days of liberated Hong Kong and shows the quick return of commercial activity, supported by the postal system.
- Sandra Freeman, Calgary, AB General #30-36  
***Lamponing the Three Axis Amigos***  
 Anti-Axis patriotic propoganda of forgotten postal history and related items issued by frustrated civilians.
- Sam Chiu, North York, ON One Frame #37  
***Pre-War Port Arthur, China 1898-1904***  
 Postal history of this Northern China pot is shown before the Japanese invasion in the Russo Japanese War.
- David Bartlet, Calgary, AB General #38-42  
***Voluntary Fundraising for WWI***  
 WWI fundraising through thrift, saving stamps and victday bonds and their promotion
- Alexander Liusz Moser, St. Albert, AB Youth #43  
***Time of Dinosaurs***  
 My exhibit is about dinosaurs. My favorite dinosaur stamps are included.
- David Piercey, Edmonton, AB General #44-53  
***Early Tourism in Canada's Rocky Mountain parks***  
 A picture postcard exhibit showing the activities and attractions for touts to the Rocky Mountains parks 1900-1950.
- David Bartlet, Calgary, AB General #54-56  
***13th Canadian Scout Jamboree***  
 Philatelic items from the jamboree post office at Camp Nedogae, Novascotia 8-15 July, 2017
- Amelia Kelbert, Calgary, AB Youth #57-58  
***The World of the Monarch Butterfly***  
 My exhibit is about these beautiful butterflies, their life cycle in North America, their migration to Mexico and California, their roosts and their Caribbean homes.

- Steven Friedenthal, St. Albert, AB    General    #59-65  
***Czechoslovakia Machine Advertising Cancels:  
The First Republic Period***  
This exhibit shows the machine advertising/slogan cancels of the new country of Czechoslovakia from its early days to its dismemberment just prior to World War II.
- Hal Kellett, Saskatoon, SK    General    #66-69  
***The British Commonwealth Air Training Plan***  
This exhibit follows the training of airmen from the British Commonwealth in Canada from 1940-1945.
- Ella Liusz Moser, St. Albert, AB    Youth    #70  
***Animals of the World***  
My exhibit is about different animals found in the world.
- Jan Brookes, Calgary, AB    General    #71-75  
***The Evolution of the World Wildlife Fund Logo***  
This exhibit is a comprehensive study of the WWF Logo as part of the design of postage stamps and other philatelic items.
- Neil Donen, Victoria, BC    One Frame    #76  
***The 1935 Quetta Earthquake***  
One frame exhibit examining the postal system's responses and process to the 1935 Quetta earthquake.
- Joel Weiner, Edmonton, AB    General    #77-84  
***Cancellations used by the Allied Forces in Palestine during World War I 1917-1920***  
British Army Post Offices, Stationary Offices, the offices of the ANZAC, Indian, Italian & French forces and the Railway Post Offices used during the Palestine campaign.
- Fred Fawn, Toronto, ON    One Frame    #85  
***Marx & Engels, First Time on Stamps in the World 1919***  
A traditional exhibit covering the first stamps with Marx & Engels images from Hungary.

- Donna Trathen, Calgary, AB General #86-90  
***Christina Broom, her work as a photographer***  
 This thematic postcard exhibit will show life in London, England (1902-1939), photographed by Christina Broom, considered to be Great Britain's first female press photographer.
- Ed Dykstra, Edmonton, AB General #91-94  
***1934 Cartier Commemorative - Single Stamp Study***  
 Displaying early engravings to varieties, various uses such as first flights, business mail and other varieties.
- Jean-Jacques Tillard, St Pierre Miquelon One Frame #95  
***St Pierre et Miquelon le 2F "Croix de Langlade" de 1947***  
 Complete study with attention to pre-production material.
- Raymond Villeneuve, Canmore, AB General #96-98  
***Special Delivery Service in Canada: Forms and Labels***  
 This exhibit presents a number of forms and labels that allowed the special delivery items to be more visible and delivery to be more efficient.
- Ken Snelson, Toronto, ON General #99-103  
***The Returned Letter Offices of the United Kingdom - The Exclusively Metropolitan Offices Era 1811 - 1873***  
 The returned letter offices of London, Edinburgh and Dublin from the creation of the London RLO in 1811 to the 1873 opening of Glasgow RLO.
- Sam Chiu, North York, ON General #104-111  
***Wei Hai Wei, China, 1895-1949***  
 Postal history of the British leased territory of Wei Hai Wei in North China is shown for its British and Chinese post office.
- Ken Snelson, Toronto, ON One Frame #112  
***Nasty Wars of the 2nd Half of the 20th Century, Undeliverable UK Mail***  
 Undeliverable UK mail due to numerous wars from Indonesia (1946) to Bosnia (1999) that killed and displaced millions of people despite "peace" between major powers.
-

# CANADA • BNA

## Choice Early Classics to Modern Varieties



### SEE OUR NEW WEBSITE



**www.saskatoonstamp.com**

Our **New Website** offers a secure on-line **Stamp Store** where you can view & order from our large stock of **Canadian & BNA stamps & Philatelic Literature**. You can also start a **Want List**, view **Recent Catalogues**, browse through our **Rare Stamps Gallery** and more.



**CANADIAN ERRORS — BOUGHT \* SOLD \* TRADED**

- ❖ IMPERFORATES ❖ MISSING COLOURS ❖ INVERTS ❖ MISPERFS ❖
- ❖ COLOUR SHIFTS ❖ PRINTED ON GUM ❖ BETTER VARIETIES ❖



**FREE ON REQUEST:**

*Our current private treaty catalogue of Canadian and British North American Stamps. Call, E-mail or Write.*



*Internationally Recognized as a Leading Dealer in Canadian Errors and Varieties*

## SASKATOON STAMP CENTRE

PO Box 1870, Saskatoon, SK, S7K 3S2, Canada

Call TOLL FREE 1-800-205-8814 in North America or

Phone: (306) 931-6633 or Email: [ssc@saskatoonstamp.com](mailto:ssc@saskatoonstamp.com)